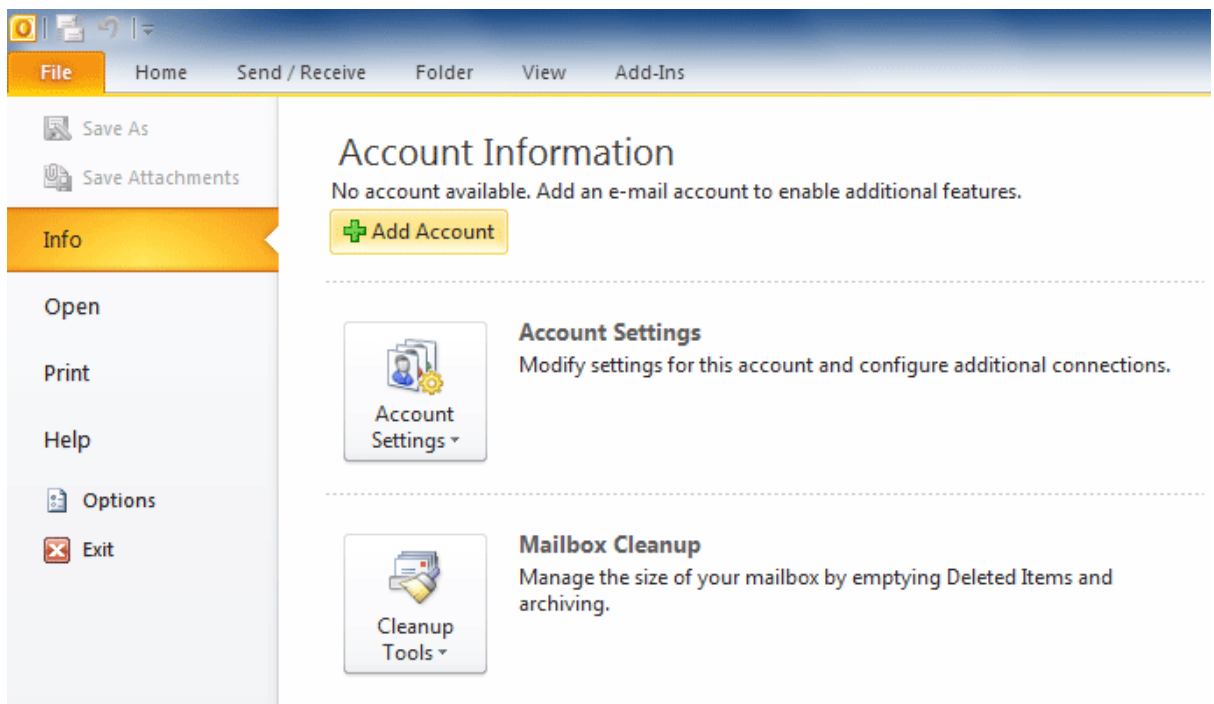


Enable SSL on Outlook Mail Clients

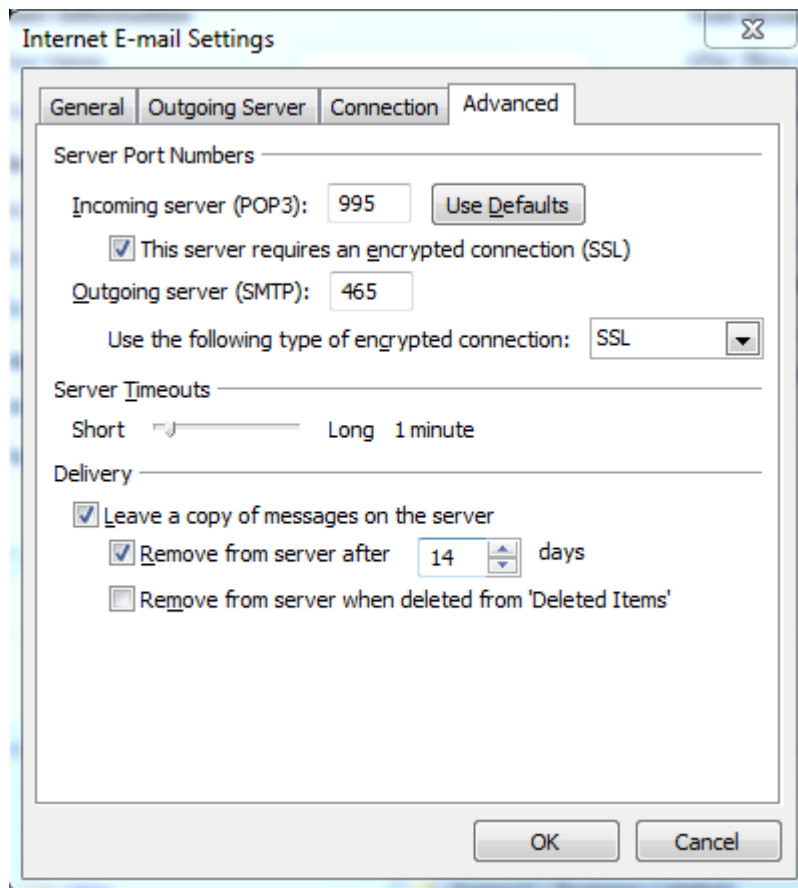
A. Outlook 2010

To enable SSL encryption in Outlook 2010, you will need to do the following:

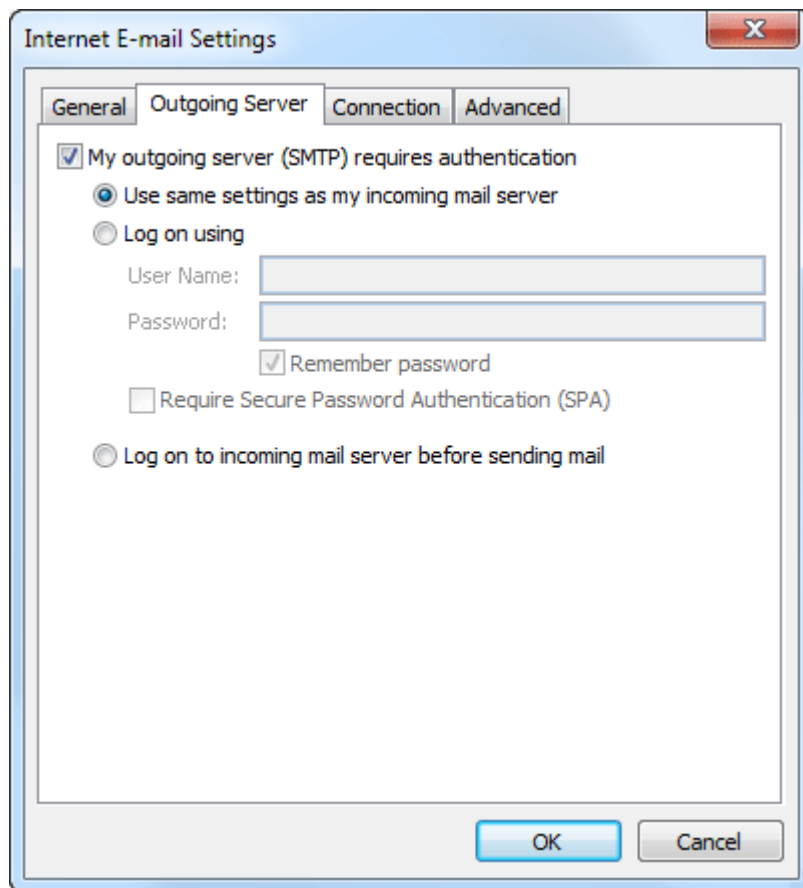
1. Click File, then Click on the big Account Settings button and then click on the Edit Accounts button that appears



2. Click More Settings.
3. Click the Advanced tab.
4. For the outgoing mail server type 465. Check the box next to This server requires a secure connection (SSL). **You only need to do this step if you are using mail.YOUR DOMAIN.com as the outgoing mail server. Otherwise do not change it.**
5. For the incoming mail server type 995. Select SSL from the drop down menu next to Use the following type of encrypted connection.



6. Click on the Outgoing Server tab and check the box that the Outgoing Mail Server (SMTP) requires authentication.



7. Click Ok, then Next, then Finish. That's it! SSL encryption is now enabled.

Outlook 2003

To enable SSL encryption in Outlook 2003, you will need to do the following:

1. Click Tools, then Email Accounts.
2. Place a dot in the circle next to View or change existing email accounts.
3. Click your email account then click Change.
4. Click More Settings.
5. Click the Advanced tab.
6. For the outgoing mail server type 465. Check the box next to This server requires a secure connection (SSL). **You only need to do this step if you are using mail.YOUR DOMAIN.com as the outgoing mail server. Otherwise do not change it.**
7. For the incoming mail server type 995. Check the box next to This server requires a secure connection (SSL)
8. Click Ok, then Next, then Finish. That's it! SSL encryption is now enabled.

Outlook 2007

To enable SSL encryption in Outlook 2007 you will need to do the following:

1. Click on Tools, then Account Settings.
2. Click Change.
3. Click More Settings.
4. Click the Advanced tab.
5. For the outgoing mail server type 465. Check the box next to This server requires a secure connection (SSL). **You only need to do this step if you are using mail.YOUR DOMAIN.com as the outgoing mail server. Otherwise do not change it.**
6. For the incoming mail server type 995. Select SSL from the drop down menu next to Use the following type of encrypted connection.
7. Click Ok, then Next, then Finish. That's it! SSL encryption is now enabled.

Outlook Express

To enable SSL encryption in Outlook Express, you will need to do the following:

1. Click Tools, then Accounts
2. Click the Mail tab, then click Properties..
3. Click the Servers tab.
4. Click the Advanced tab.
5. For the outgoing mail server type 465. Check the box next to This server requires a secure connection (SSL). **You only need to do this step if you are using mail.YOUR DOMAIN.com as the outgoing mail server. Otherwise do not change it.**

6. For the incoming mail server type 995. Check the box next to This server requires a secure connection (SSL)
7. Click Ok. That's it! SSL encryption is now enabled.